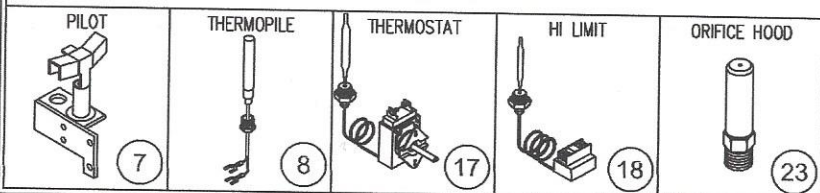
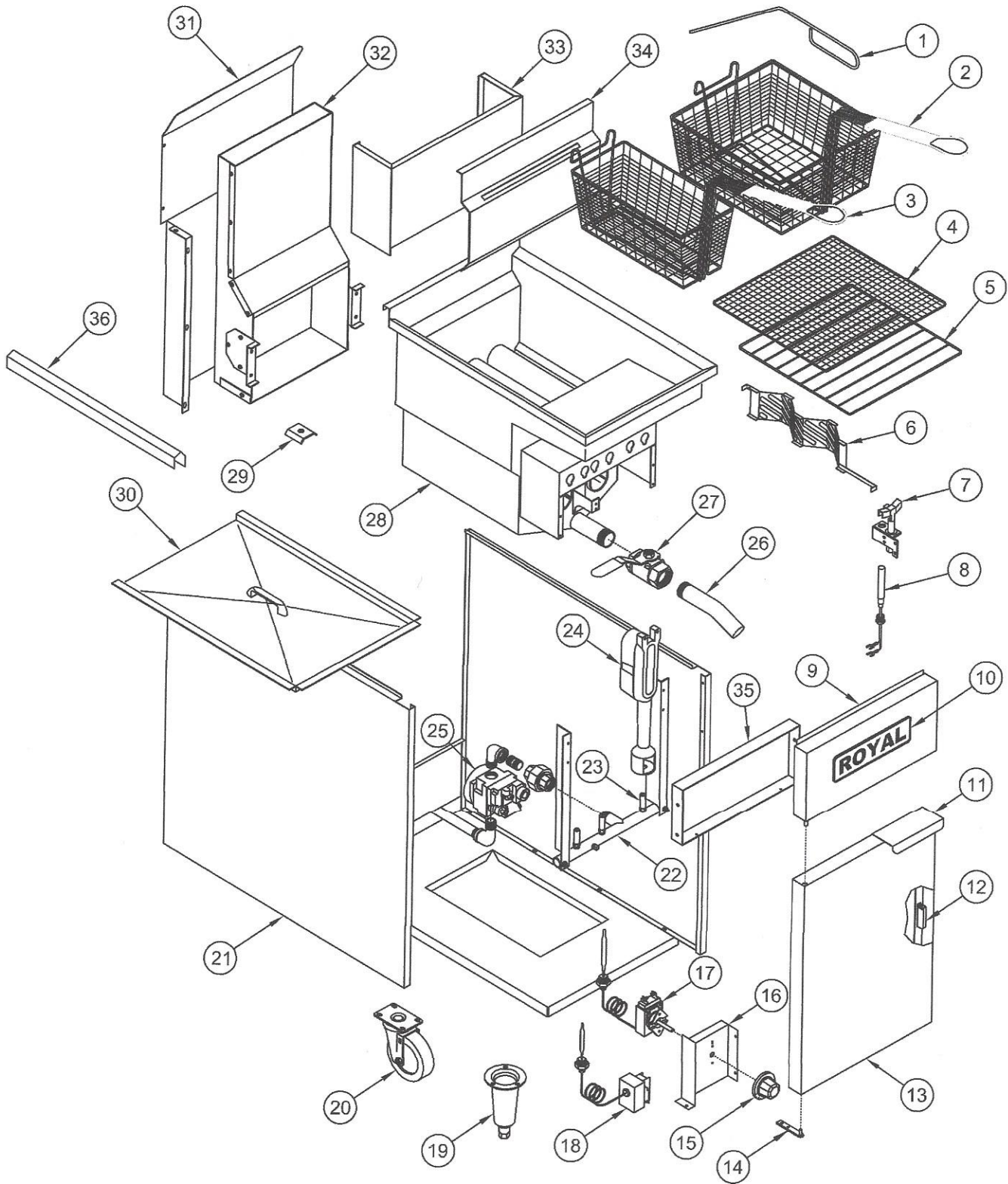


# RFT - 50, 60S & 75

## Tube Fryer - 50, 60 & 75 lbs.



## RFT - 50, 60S & 75

### Tube Fryer - 50, 60 & 75 lbs.

NRE #	ITEM NO.	PART NO.	DESCRIPTION
055925	1	3105	Clean out rod (goofer rod)
	2	3103 3104	Frying basket 60 lbs. (mid size) Frying basket 75 lbs. (large)
	3	3100	Frying basket 50 lbs. (small)
	4	3106 3107 3108	Crumb screen -fine mesh 75 lbs. (large) Crumb screen -fine mesh 60 lbs. (mid size) Crumb screen -fine mesh 50 lbs. (small)
	5	3004 3005 3006	Crumb screen - regular 75 lbs. (large) Crumb screen - regular 60 lbs. (mid size) Crumb screen - regular 50 lbs. (small)
	6	28021 28019	Diffuser assy. 75 lbs. (large) Diffuser assy. 50 & 60 lbs. (small)
032603		3231	Pilot burner w/bell orifice (natural gas)
032603	7	3232	Pilot burner w/bell orifice (propane gas)
130052		3207	Pilot bell orifice only (natural gas)
130027		3206	Pilot bell orifice only (propane gas)
065401	8	3109	Thermopile
	9	28205 28406	Front panel 50 lbs Front panel 60, 75 lbs
	10	2649	Royal logo (Large)
	11	1005	Offset Pull Handle (chrome handle)
063145	12	1724	Door magnet
	13	28237 28430	Door panel assembly 50 lbs Door panel assembly 60, 75 lbs
	14	28020	Door hinge assy.
054304	15	3110	Knob thermostat
	16	28003	Bracket - thermostat/hi-limit
065402	17	3113	Thermostat
030651	18	3112	Hi-limit switch
	19	1219	Chrome cone leg
	20	2193 2192	Caster 5" w/brake Caster 5" without brake
	21	28201 28202 28402 28403	Side outer panel - Right side 50, 60 lbs Side outer panel - Left side 50, 60 lbs Side outer panel - Right side 75 lbs Side outer panel - Left side 75 lbs
	22	3227 3228	Manifold pipe 50 lbs. (3 tube) Manifold pipe 60, 75 lbs. (4 tube)
130158	23	3201-32	Orifice hood #32 (brass) natural gas, 38,000 BTU
130159		3202-50	Orifice hood #50 (brass) propane gas, 38,000 BTU
	24	3116	Burner (cast iron)

**RFT - 50, 60S & 75 (cont.)**  
**Tube Fryer - 50, 60 & 75 lbs.**

ITEM NO.	PART NO.	DESCRIPTION
25	3114	Gas valve 3/4" natural gas
	3115	Gas valve 3/4" propane gas
26	3132	Drain extension pipe 1-1/4 NPT.
27	3133	Drain valve 1-1/4" NPT.
28	28211	Vessel assembly 50 lbs. (small)
	28453	Vessel assembly 60 lbs. (mid size)
	28413	Vessel assembly 75 lbs. (large)
29	28005	Probe holder
30	28229	Vessel tank cover 50 lbs. (small)
	28459	Vessel tank cover 60 lbs. (mid size)
	28428	Vessel tank cover 75 lbs. (large)
31	28221	Back panel cover 50 lbs. (3 tube)
	28422	Back panel cover 60, 75 lbs. (4 tube)
32	28236	Flue box assy. 50 lbs. (3 tube)
	28429	Flue box assy. 60, 75 lbs. (4 tube)
33	28220	Vessel back panel 50 lbs. (3 tube)
	28421	Vessel back panel 60, 75 lbs. (4 tube)
34	28208	Basket hanger 50 lbs. (3 tube)
	28409	Basket hanger 60, 75 lbs. (4 tube)
35	28204	Front baffle 50 lbs. (3 tube)
	28405	Front baffle 60 lbs., 75 lbs. (4 tube)
36	28238	Joiner strip for RFT-50, RFS-40
	28431	Joiner strip for RFT-75

WRE #

130157

130160