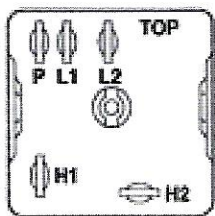


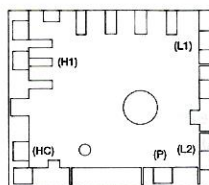
WIRING ROBERTSHAW VSI TO ROBERTSHAW 5500 M SERIES

Connect wires from old switch to new switch as follows:

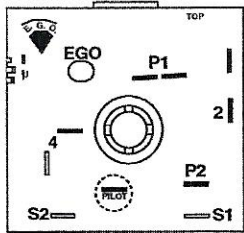


VSI Switch Terminal #	connect to
L1	connect to
L2	connect to
P	connect to
H1	connect to
H2	connect to

5500M (MPA) Switch Terminal #	connect to
L1	connect to
L2	connect to
P	connect to
H1	connect to
HC	connect to

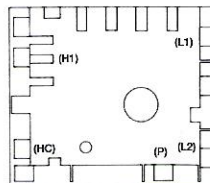


WIRING EGO TO ROBERTSHAW



Old (EGO) Switch Terminal #	connect to
P1	connect to
P2	connect to
Pilot	connect to
4	connect to
2	connect to

5500 M (MPA) Switch Terminal #	connect to
L2	connect to
L1	connect to
P	connect to
H1	connect to
HC	connect to

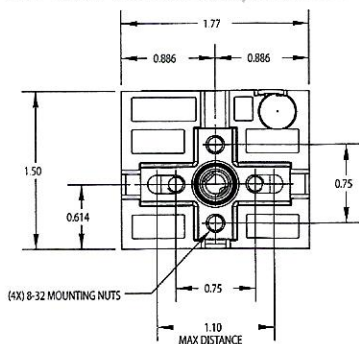


SLIP-FIT® DIAL ASSEMBLY

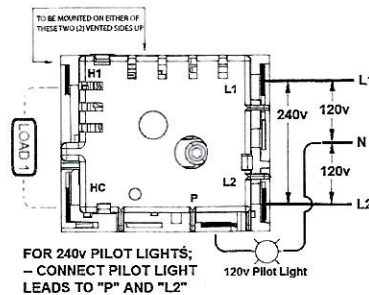
NOTE: IT IS ESSENTIAL TO READ EACH STEP COMPLETELY BEFORE PERFORMING THE DIRECTIONS GIVEN IN THAT STEP.

1. Turn control to the "Off" position.
2. Locate the 4-way insert included with this dial kit. Push the 4-way insert flush onto the tip of the dial shaft of the control.
3. Referring to the other control knobs on the appliance, determine which way the new knob is to be oriented in the "Off" position; vertical or horizontal.
4. Using the vertical or horizontal orientation desired, partially assemble the knob onto the insert to obtain proper alignment. Then remove the knob with the insert attached, and press the insert all the way onto the knob. When completely in place, approximately 1/8" of the 4-way insert will be outside of the knob. Reinstall knob.
5. Take the Slip-Fit overlay, and carefully remove the clear protective covering over the numbered side. Begin removal from the inside edge of the overlay.
6. Carefully peel off the backing from the adhesive that is on the back of the Slip-Fit overlay. Try not to touch the adhesive.
7. Position the Slip-Fit dial overlay over the knob with the "Off" position aligned in the desired position. Carefully slide the Slip-Fit overlay down and over, locating the ribs on the knob.
8. Press the Slip-Fit overlay firmly into position. Use a soft cloth and rub around the overlay to obtain a permanent fit.

MOUNTING DIMENSIONS



WIRING SCHEMATIC



WARNING: The rear housing has a 1/4" diameter hole which is an access point to be used **ONLY** by qualified personnel for insuring proper assembly and calibration of the switch. Any tampering with internal components or altering factory settings of this switch will possibly damage other electrical components on the appliance and will immediately VOID the WARRANTY of the switch.

ORDERING INFORMATION

5500M Series		Replaces		VOLTAGE	MODEL
UNI-LINE PART #	FACTORY #	UNI-LINE PART #	FACTORY #		
5500-103M	MPA-V112-1-UXM	5500-103	INF-120-599	120V AC	RESIDENTIAL
5500-104M	MPA-V112-1-UXM	5500-104	INF-120-599	120V AC	RESIDENTIAL
5500-113M	MPA-V113-1-UXM	5500-113	INF-120-599B	120V AC	RESIDENTIAL
5500-203M	MPA-V116-UXM	5500-203	INF-240-597	240V AC	RESIDENTIAL
5500-204M	MPA-V116-UXM	5500-204	INF-240-597	240V AC	RESIDENTIAL
5500-208M	MPA-V115-2-UXM	5500-208	INF-208-642	208V AC	RESIDENTIAL
5500-213M	MPA-V117-UXM	5500-213	INF-240-597B	240V AC	RESIDENTIAL
5500-134M	MPA-V114-1-UNM	5500-134	INF-120-1152	120V AC	COMMERCIAL
5500-135M	MPA-V114-1-UNM	5500-135	INF-120-1152	120V AC	COMMERCIAL
5500-234M	MPA-V119-UNM	5500-234	INF-240-1153	240V AC	COMMERCIAL
5500-235M	MPA-V119-UNM	5500-235	INF-240-1153	240V AC	COMMERCIAL



Customer Service Telephone 1.800.304.6563
Customer Service Facsimile 1.800.426.0804
HVACCustomerService@robertshaw.com

For Technical Service
Telephone 1.800.445.8299
TechnicalService@robertshaw.com

Robertshaw®, Ranco®, Paragon® and Uni-Line® are trademarks of Robertshaw, its subsidiaries and/or affiliated companies. All other brands mentioned may be the trademarks of their respective owners.

www.robertshaw.com
©2016 Robertshaw
07/16 -354-00028-003 RevB